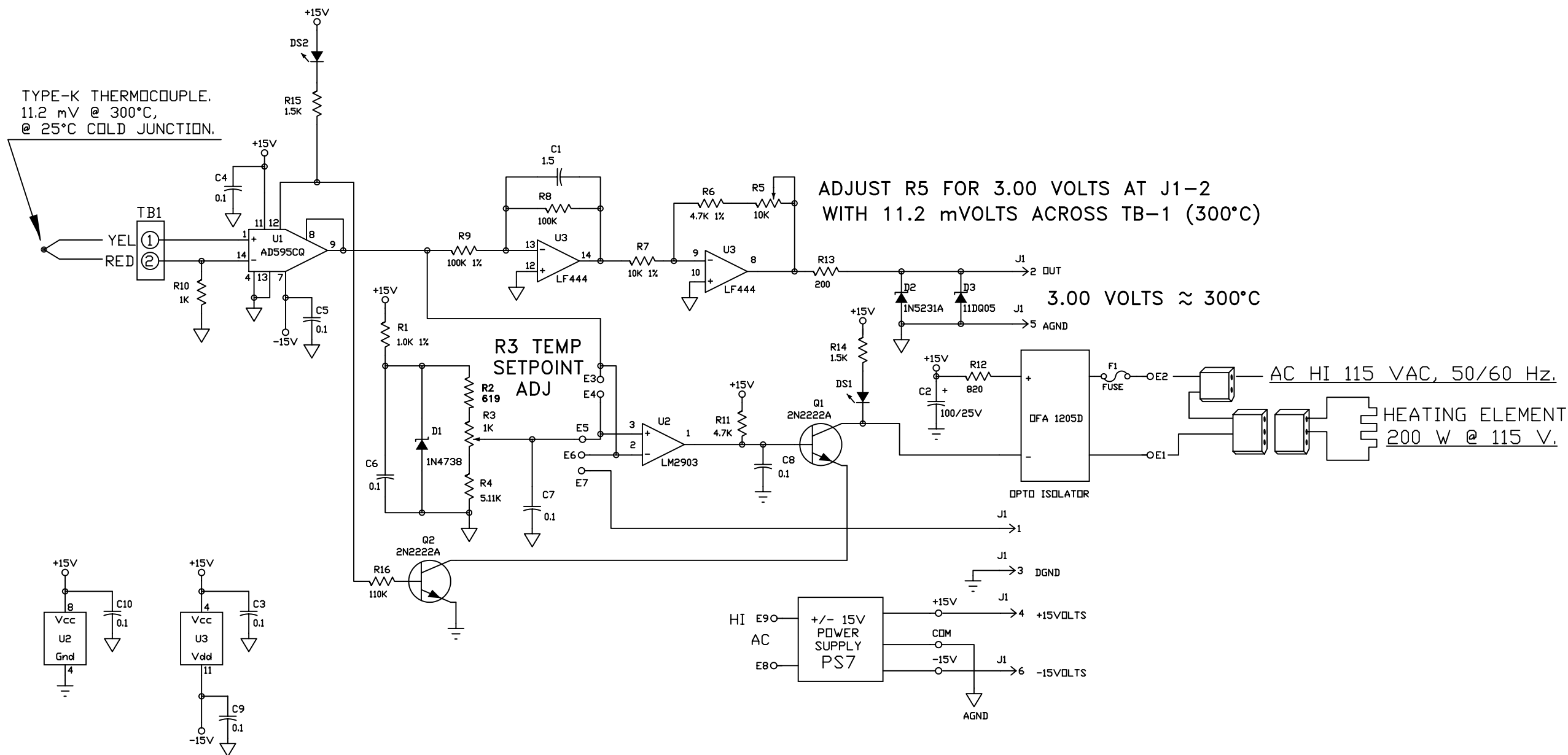


# APPENDIX A – M701 ELECTRICAL SCHEMATICS

**Table A-1: Electrical Schematics**

Part No.	Name
0025704	Schematic Diagram, temperature control, HC scrubber
00256	Assembly Diagram, temperature control, HC scrubber
02264	PCB, Moly Temp Control, CE
03744	M701, Interconnect Drawing

THIS PAGE IS INTENTIONALLY LEFT BLANK



FOR 0025604; 701 HYDROCARBON SCRUBBER

3. CAPACITANCE IS IN MICROFARADS  
 2. RESISTANCE IS IN OHMS  
 1. RESISTORS ARE 1/4W, 1%  
 NOTES: UNLESS OTHERWISE SPECIFIED

**TOLERANCES**  
 X±      XXX±  
 XX±

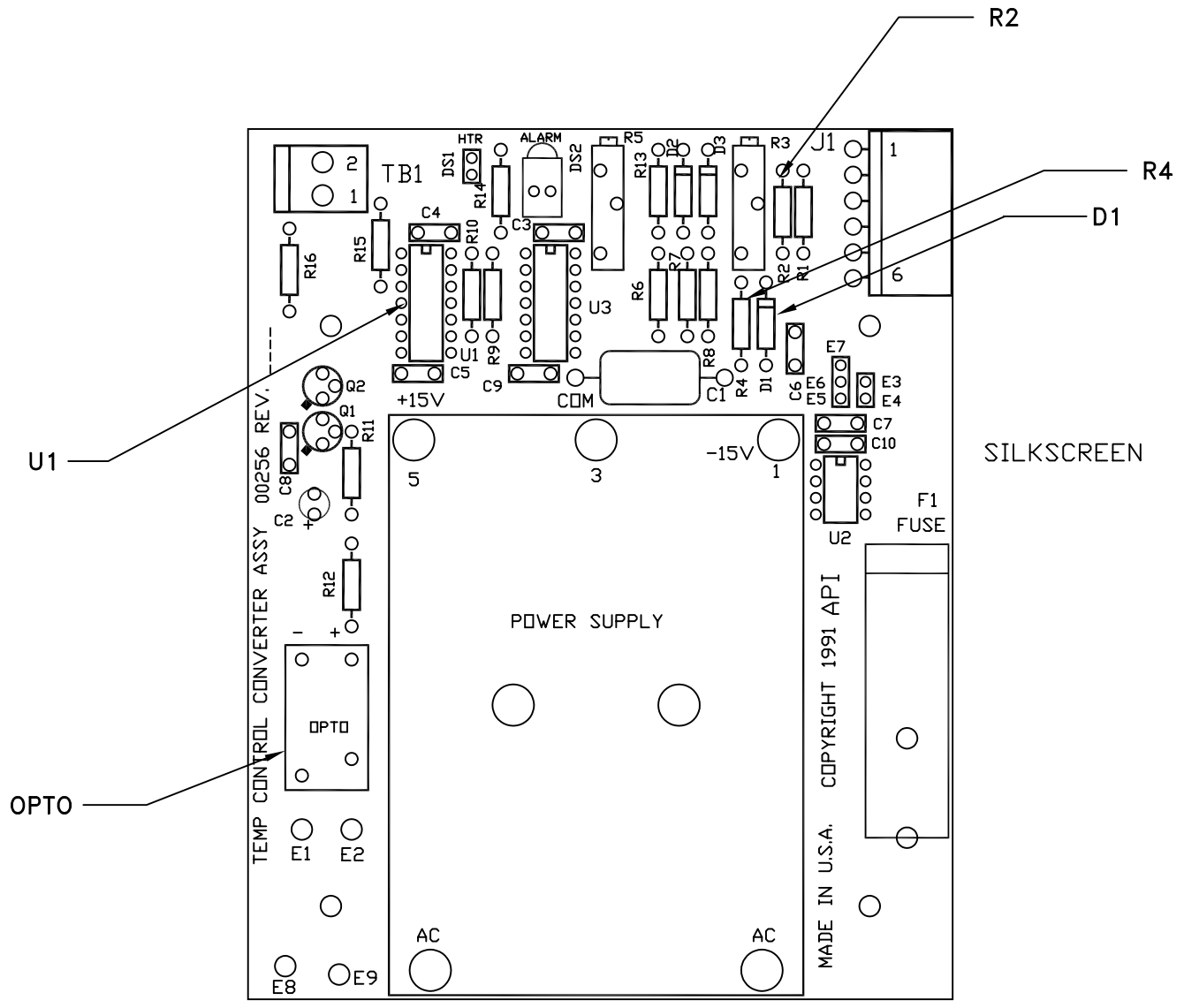
The information hereon is the property of API and is submitted in strictest confidence for reference only. Unauthorized use by anyone for any other purposes is prohibited. This document or any information contained in it may not be duplicated without proper authorization.

DATE	ECR#	DESCRIPTION OF CHANGE	BY	
<b>API</b> ADVANCED POLLUTION INSTRUMENTATION, INC. SAN DIEGO, CA.				
APPROVALS	DATE	ELECTRICAL DIAGRAM, CONVERTER TEMP CONTROL		
DRAWN pds	5.6.91			
CHECKED				
APPROVED		SIZE	DRAWING NO. 0025704	REVISION J
DO NOT SCALE DRAWING		SCALE		SHEET 1 OF 1

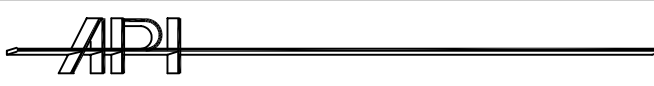
REVISIONS				
ZONE	LTR	DESCRIPTION	DATE	APPROVED
	F	INITIAL RELEASE	7/22/94	KL
	G	RS 03 WAS RS 06	12/9/94	KL
	H	ADDED -05	8/3/95	RH
	I	DEL SHEET 1, SEE SHEET 2	3/11/99	RH

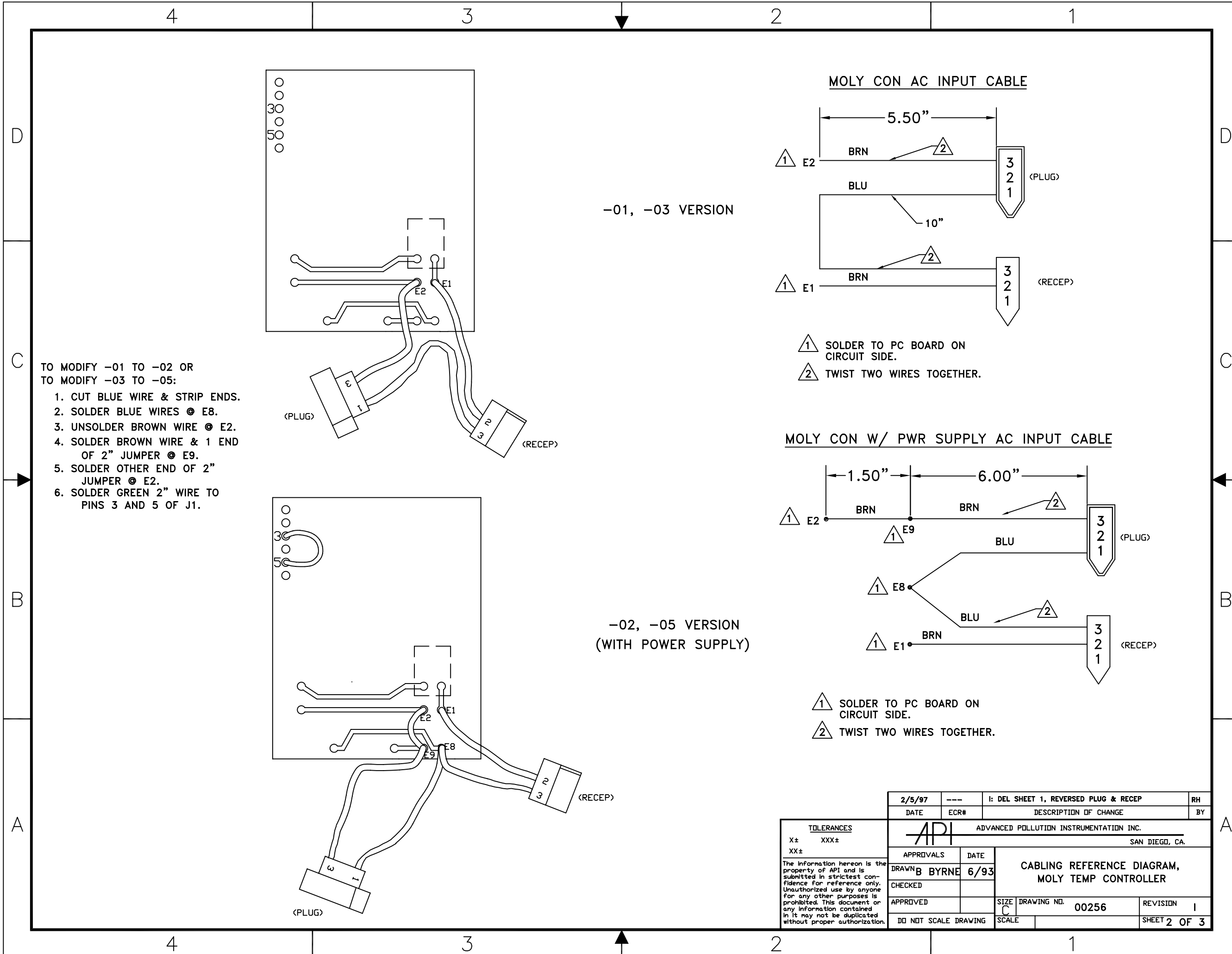
MODIFICATION NOTES:

REF DESIG	-01,-02	-03	-04	-05
D1	DD7	DD4	DD4	DD7
U1	IC5	IC72	IC72	IC72
OPTO	RL2	RL7	RL7	RL12
R2	RS3	RS176	RS3	RS3
R4	RS3	RS51	RS1	RS3



VERSION -01, -02, -03, -04, -05 SHOWN

QTY REQD	CODE IDENT	PART OR IDENTIFYING NUMBER	NOMENCLATURE OR DESCRIPTION
PARTS LIST			
UNLESS OTHERWISE SPECIFIED DIMENSIONS ARE IN INCHES TOLERANCES ARE: FRACTIONS DECIMALS ANGLES ± .XX ± .03 ± .XXX ± .010		CONTRACT NO.	
MATERIAL FLGFN062C2/2A1A PER MIL-P-13949		APPROVALS	DATE
FINISH SEE NOTES		DRAWN pds	5.17.91
NEXT ASSY		CHECKED	
USED ON		ISSUED	
APPLICATION		 PRINTED CIRCUIT ASSY, TEMP CONVERTER	
DO NOT SCALE DRAWING		B FSCM NO.	DWG. NO. 00256
		SCALE 1:1	REV. I
		SHEET 1 OF 3	

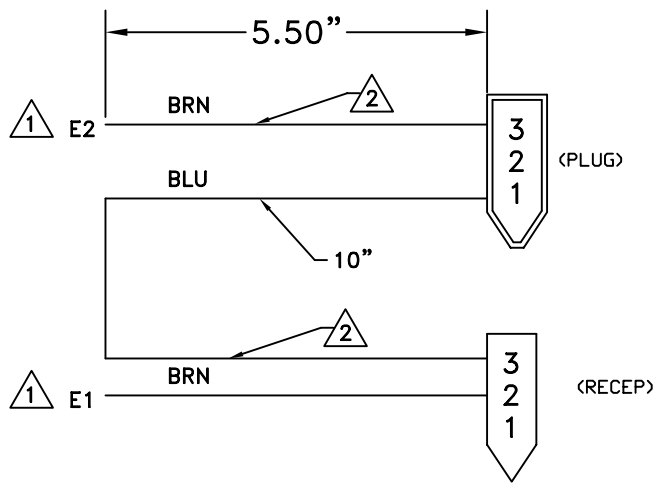


- TO MODIFY -01 TO -02 OR  
TO MODIFY -03 TO -05:
1. CUT BLUE WIRE & STRIP ENDS.
  2. SOLDER BLUE WIRES @ E8.
  3. UNSOLDER BROWN WIRE @ E2.
  4. SOLDER BROWN WIRE & 1 END OF 2" JUMPER @ E9.
  5. SOLDER OTHER END OF 2" JUMPER @ E2.
  6. SOLDER GREEN 2" WIRE TO PINS 3 AND 5 OF J1.

-01, -03 VERSION

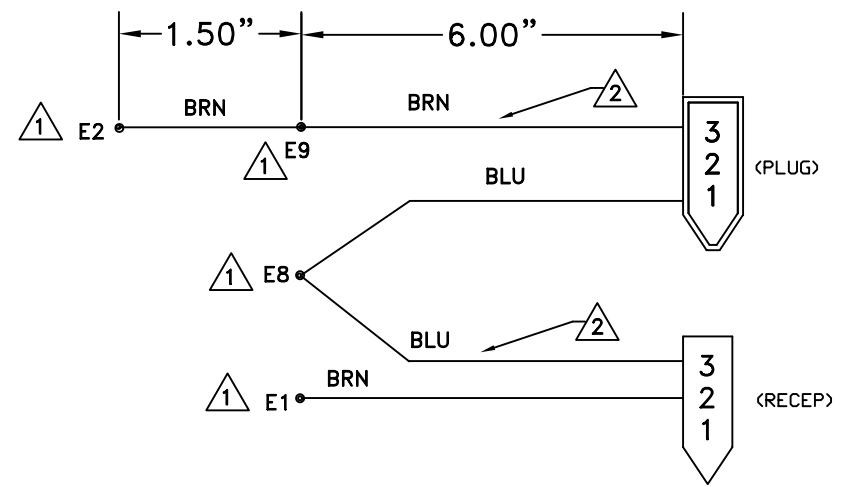
-02, -05 VERSION  
(WITH POWER SUPPLY)

MOLY CON AC INPUT CABLE



- 1 SOLDER TO PC BOARD ON CIRCUIT SIDE.
- 2 TWIST TWO WIRES TOGETHER.

MOLY CON W/ PWR SUPPLY AC INPUT CABLE

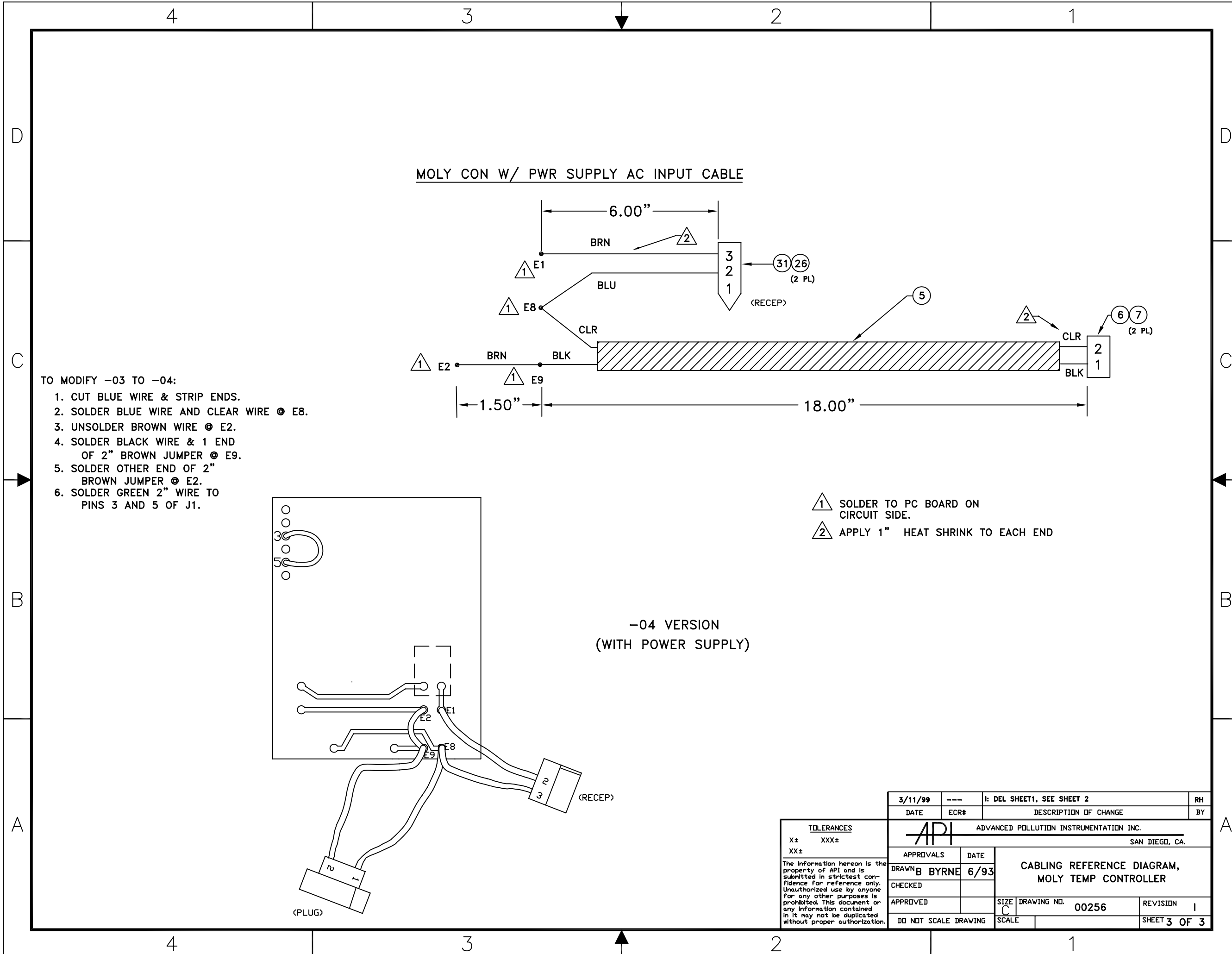


- 1 SOLDER TO PC BOARD ON CIRCUIT SIDE.
- 2 TWIST TWO WIRES TOGETHER.

2/5/97	---	i: DEL SHEET 1, REVERSED PLUG & RECP		RH
DATE	ECR#	DESCRIPTION OF CHANGE		
 ADVANCED POLLUTION INSTRUMENTATION INC. SAN DIEGO, CA.				
APPROVALS	DATE	<b>CABLING REFERENCE DIAGRAM, MOLY TEMP CONTROLLER</b>		
DRAWN BY	DATE			
CHECKED				
APPROVED		SIZE	DRAWING NO.	REVISION
DO NOT SCALE DRAWING		C	00256	1
			SCALE	SHEET 2 OF 3

**TOLERANCES**  
X±   XXX±  
XX±

The information hereon is the property of API and is submitted in strictest confidence for reference only. Unauthorized use by anyone for any other purposes is prohibited. This document or any information contained in it may not be duplicated without proper authorization.

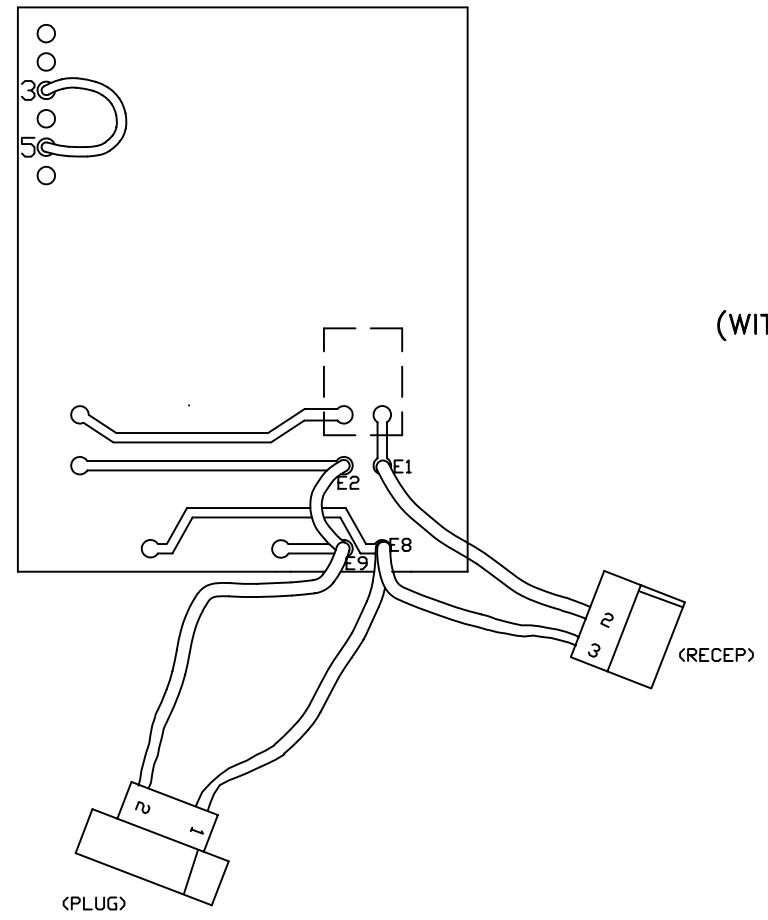


MOLY CON W/ PWR SUPPLY AC INPUT CABLE

- TO MODIFY -03 TO -04:
1. CUT BLUE WIRE & STRIP ENDS.
  2. SOLDER BLUE WIRE AND CLEAR WIRE @ E8.
  3. UNSOLDER BROWN WIRE @ E2.
  4. SOLDER BLACK WIRE & 1 END OF 2" BROWN JUMPER @ E9.
  5. SOLDER OTHER END OF 2" BROWN JUMPER @ E2.
  6. SOLDER GREEN 2" WIRE TO PINS 3 AND 5 OF J1.

- ① SOLDER TO PC BOARD ON CIRCUIT SIDE.
- ② APPLY 1" HEAT SHRINK TO EACH END

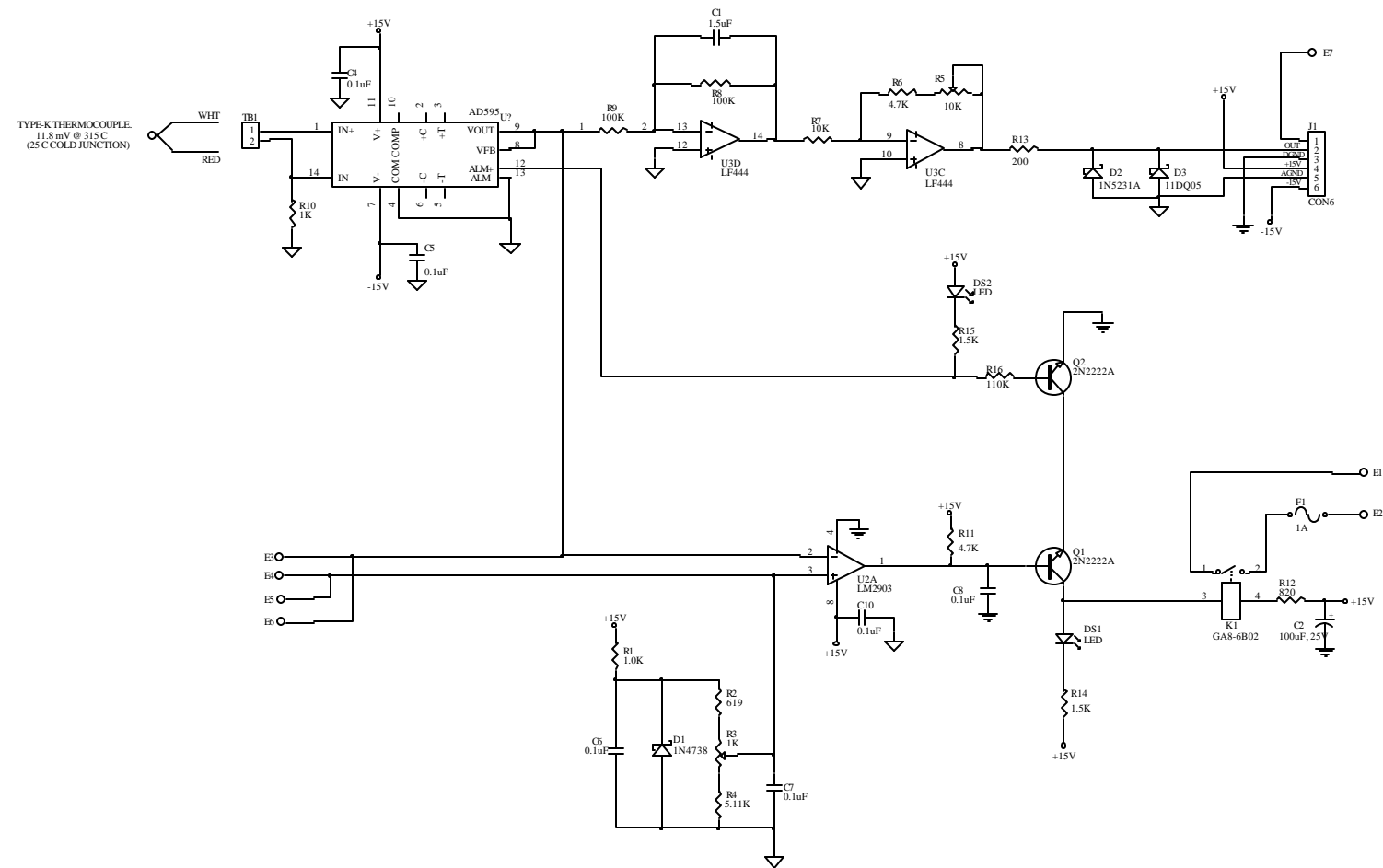
-04 VERSION  
(WITH POWER SUPPLY)



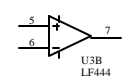
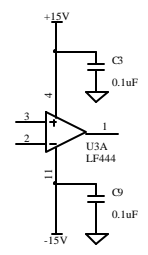
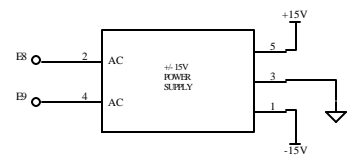
**TOLERANCES**  
X± XXX±  
XX±

The information hereon is the property of API and is submitted in strictest confidence for reference only. Unauthorized use by anyone for any other purposes is prohibited. This document or any information contained in it may not be duplicated without proper authorization.

3/11/99	---	I: DEL SHEET1, SEE SHEET 2		RH
DATE	ECR#	DESCRIPTION OF CHANGE		BY
<b>API</b>		ADVANCED POLLUTION INSTRUMENTATION INC. SAN DIEGO, CA.		
APPROVALS	DATE	<b>CABLING REFERENCE DIAGRAM, MOLY TEMP CONTROLLER</b>		
DRAWN <b>B BYRNE</b>	<b>6/93</b>			
CHECKED				
APPROVED		SIZE <b>C</b>	DRAWING NO. <b>00256</b>	REVISION <b>1</b>
DO NOT SCALE DRAWING	SCALE			SHEET <b>3</b> OF <b>3</b>

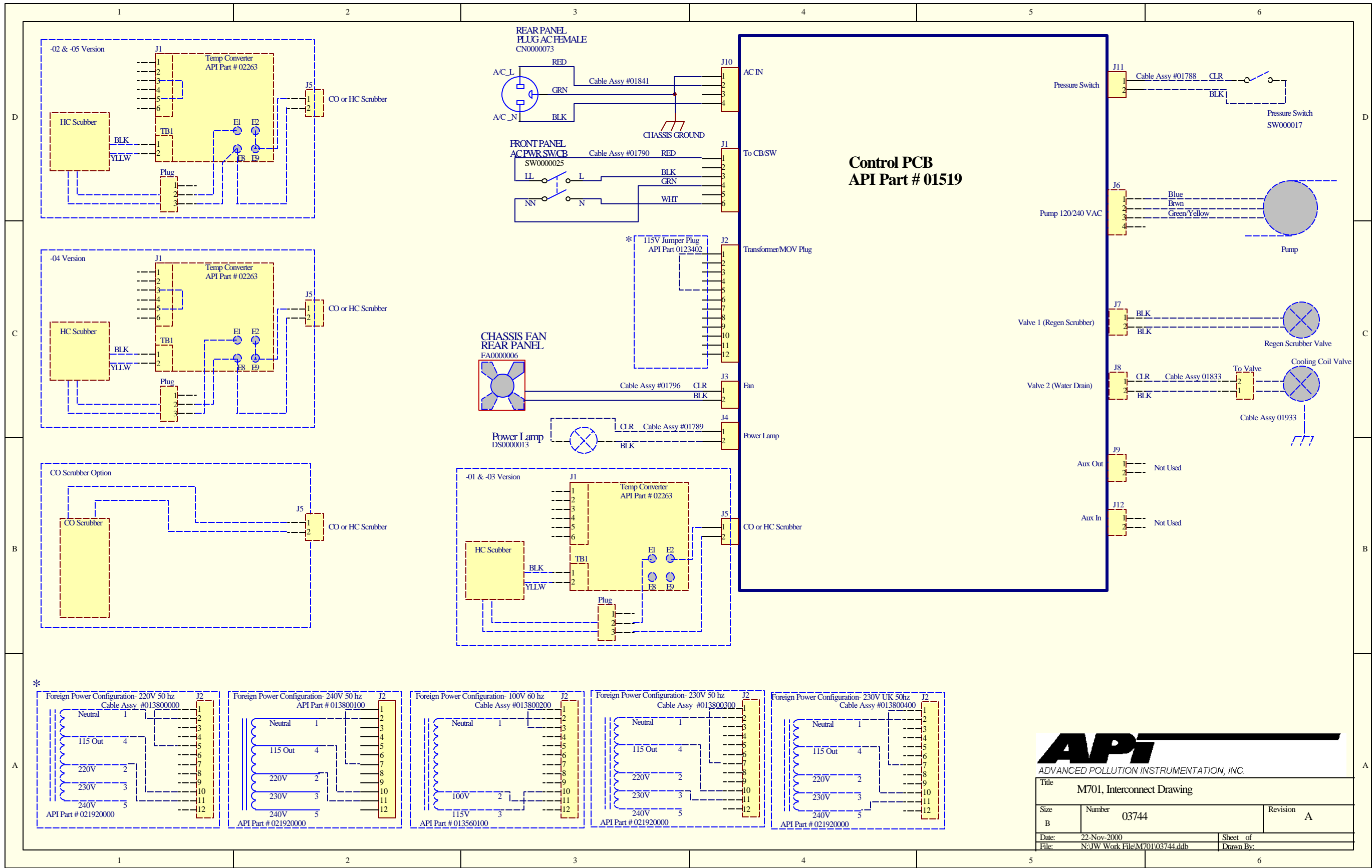


NOTES:  
 1. RESISTORS ARE 1/4W, 1%  
 2. RESISTANCE IS IN OHMS  
 3. CAPACITANCE IS IN MICROFARADS  
 UNLESS OTHERWISE SPECIFIED

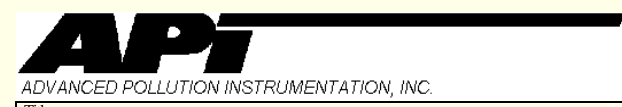
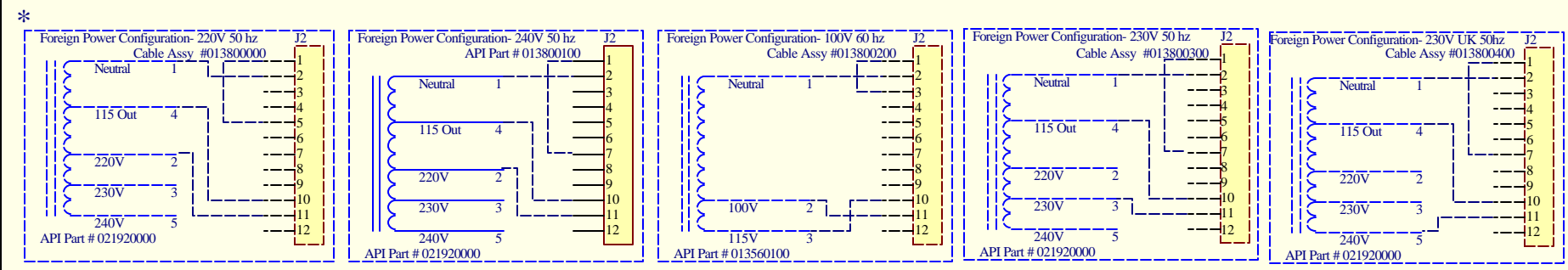


Part #	U1	TC Type	F1	Mv @ TB1
0226301	AD594AQ	J	1 Amp	15.8 +/- 1
0226302	AD594AQ	J	1 Amp	15.8 +/- 1
0226303	AD595AQ	K	1 Amp	28.1 +/- 2

APPROVALS		DATE	PCB, Moly Temp Control, CE	
DRAWN			SEE DRAWING NO.	REVISION
CHECKED			C 02264	B
APPROVED			LAST MOD. 29-Jan-2001	SHEET 1 of 1



**Control PCB  
API Part # 01519**



Title <b>M701, Interconnect Drawing</b>		
Size B	Number 03744	Revision A
Date: 22-Nov-2000	Sheet of	
File: N:\JW Work File\M701\03744.ddb	Drawn By:	